

Notice of Intent

Report Status: Errors

8/23/2019 1:54 PM

Submittal Status: Submitted to County

Permittee/Permit Operator [REDACTED]				Operator ID/Permit Number [REDACTED]		Document number WEB1913690600	
County 54 Tulare	Section 17	Township 20S	Range 26E	Meridian M	App Method/Fume Code Ground		Commercial Applicator VIEIRA CUSTOM SPRAYING 384 MITCHELL AVE
Site Identification Number 07-103		Site District (if Applicable)			Planted Area - Units 57 ACRES		TULARE CA 93274
Location 1/4 NA 216, 1/2 WR 180				Block ID (if applicable)		Nursery No	
Date/Time of Proposed Application 8/24/2019 2:00 PM			Proposed Treated Area - Units 57 ACRES		Commodity Treated 22004 SORGHUM FOR/FOD		
Days Re-entry	Days Pre-harvest	Applied/Supervised By			Reviewed By - Date/Time		Submitted By Joshua Vieira
Approved/Denied [REDACTED]	Environmental Changes/Comments MIX IN THE ORDER AS LISTED ENSURE NOT TO DRIFT APPLY EVENLY THROUGHOUT THE ENTIRE FIELD ALWAYS READ AND FOLLOW ALL LABEL INSTRUCTIONS do not drift mix in the order as listed. Please read and follow all label instructions off target applications of yukon will harm or kill off target plants do not spray when temperatures are above 85 degrees do not spray when winds are greater than 10 mph beware of surrounding crops ditches are down, field is ready to spray bill Degroot Dairy #1 deliver material to Viera Custom Spraying Restrictions: Avoid Drift -- Certified Applicator Required -- Notice of Intent Required -- See Label Regarding Feeding/Grazing -- California Code of Regulations 6690-6692 go into effect starting January 2018. In summary these codes state pesticide use within a quarter mile of a school site or day care facility is prohibited between the hours of 6 AM to 6 PM on days when school is in session. For details or exceptions to this general summary please reference the code or speak to your County Ag Commissioner for clarification.						

Chem #	Product	Label #	Rate	Dilution	Total Product Used	Target Pest
1	YUKON HERBICIDE	81880-6-AA-10163	6 Ounce / 1 ACRES	20.0 Gallon	21.38 Pounds	Pigweed, Redroot

RECEIVED ON

AUG 23 2019

Validation Messages				<u>PESTICIDES</u>
Message Type	Line Number	Text	Field Name	
Error		SORGHUM FOR/FOD is not a valid commodity for this site.	Commodity On Site	

Yukon does not allow for applications within 1/2 mi from cotton. Neighbor has cotton.

Product Use Recommendation

39134 - 5509380 (Rec No. 5509380)

343 s holland ct Visalia, CA 93292 Phone: [REDACTED]		Proposed Date / Timing 2019-08-23	Expire Date 2019-08-30	PCA & License [REDACTED]				
		Applicator Viera Custom Spraying 384 mitchell ave tulare, CA 93274 Phone: 559-687-0258		Grower & Permit Number [REDACTED] Exeter, CA 93221 Phone: [REDACTED]				
County Tulare	Site Commodity SORGHUM FOR/FOD	Preplant No	Method Ground	Proposed 57 Acres	Treated 57 Acres	Tank Vol	No. Tanks	Spray Vol 20 Ga
Site ID / STR [REDACTED]	Location [REDACTED] R 180 GWPA-RUNOFF			Planted Area 57 Acres	Proposed Area 57 Acres	Treated Area 57 Acres	Row	Band

***** ALWAYS READ AND FOLLOW LABEL DIRECTIONS *****

** In addition, adhere to all State and local regulations governing the use of these products **
 I certify that alternative and mitigation measures that would substantially lessen any significant adverse impact on the environment have been considered and, if feasible, adopted.

Product Name	Signal Word	Labeled Commodity	Pest	Rate	Per Full Tank	Mat. Req.
NOI ^{Gowan} Yukon (81880-6-AA-10163) (55.00% - Sodium Salt Of Dicamba)	Caution	Sorghum, Forage	Pigweed, Redroot	6 Oz / A		21.38 Lb
Mar Vista Resources MSO Methylated Seed Oil Surfactant / Penetrant (1051226-50005)	Warning	Not Applicable (rate Exception)	Na	1 Pt / A		7.13 Ga

Pre-Harvest Interval : 30 Days

Re-Entry Interval : 24 Hours

Restrictions: Avoid Drift -- Certified Applicator Required -- Notice of Intent Required -- See Label Regarding Feeding/Grazing -- California Code of Regulations 6690-6692 go into effect starting January 2018. In summary these codes state pesticide use within a quarter mile of a school site or day care facility is prohibited between the hours of 6 AM to 6 PM on days when school is in session. For details or exceptions to this general summary please reference the code or speak to your County Ag Commissioner for clarification.

Species Toxic To: Non-Target Vascular Plants

Criteria Used For Determining Recommendation: Field Observation -- Prevention -- Pest is Present

Advisor Comments:

MIX IN THE ORDER AS LISTED
 ENSURE NOT TO DRIFT
 APPLY EVENLY THROUGHOUT THE ENTIRE FIELD
 ALWAYS READ AND FOLLOW ALL LABEL INSTRUCTIONS

RECEIVED ON

do not drift
 mix in the order as listed.
 Please read and follow all label instructions
 off target applications of yukon will harm or kill off target plants
 do not spray when temperatures are above 85 degrees
 do not spray when winds are greater than 10 mph
 beware of surrounding crops

AUG 23 2019

PESTICIDES

ditches are down, field is ready to spray

bill Degroot Dairy #1
 deliver material to Viera Custom Spraying

THE MATERIAL AND CONTENT CONTAINED IN THE AGRIAN DATABASE AND ON THIS DOCUMENT ARE FOR INFORMATION ONLY AND NOT INTENDED TO BE A SUBSTITUTE FOR THE ACTUAL EPA AND/OR STATE APPROVED PRODUCT LABEL. USERS OF THIS DATABASE MUST READ AND FOLLOW THE APPROVED PRODUCT LABEL AFFIXED TO THE PRODUCT CONTAINER AND/OR APPLICABLE SUPPLEMENTAL LABELING BEFORE USE OF THE PRODUCT. RECIPIENT OF THIS DOCUMENT MUST HAVE THE PROPER KNOWLEDGE AND/OR LICENSING TO USE THIS DOCUMENT. USE SHALL BE DEEMED ACCEPTANCE OF, AND USE IS ONLY AUTHORIZED BY AGRIAN TO USERS WHO AGREE TO BE BOUND BY,

I certify that the product recommendations in this document are consistent with my review of the product notices beginning on the following page and the product(s) label.

Signature :



Date : 2019-08-23

Rec No. 5509380

© Copyright 2019, Agrian Inc. All Rights Reserved.

2019-08-23
2019-08-23
2019-08-23
2019-08-23

Notice 1 of 24 (Yukon) AGRICULTURAL USE REQUIREMENTS Use this product only in accordance with its labeling and with the Worker Protection Standard (WPS), 40 CFR Part 170. This Standard contains requirements for the protection of agricultural workers on farms, forests, nurseries, greenhouses, and handlers of agricultural pesticides. It contains requirements for training, decontamination, notification and emergency assistance. It also contains specific instructions and exceptions pertaining to the statements on this label about personal protective equipment (PPE) and restricted entry interval. The requirements in this box only apply to uses of this product that are covered by the WPS. Do not enter or allow worker entry into treated areas during the restricted entry interval (REI) of 24 hours.

Notice 2 of 24 (Yukon) APPLICATION EQUIPMENT AND INSTRUCTIONS Ground Applications: Apply YUKON Herbicide uniformly with properly calibrated ground equipment in 10 or more gal of water per acre. Other water based spray carriers may be used for directed applications, avoiding contact with crop foliage. Select spray volumes that ensure thorough and uniform weed coverage. Choose nozzles that provide optimum spray distribution and coverage at the appropriate pressure (psi). Use only ground application equipment. Thoroughly clean equipment prior to mixing spray solution. Avoid streaking, skips, overlaps, and spray drift during applications.

Notice 3 of 24 (Yukon) USE PRECAUTIONS - Avoid making applications when spray particles may be carried by air currents to areas where sensitive crops and plants are growing, when temperature inversions exist, or if the wind is gusty or in excess of 10 mph. - Use coarse sprays to avoid potential herbicide drift. Select nozzles that are designed to produce minimal amounts of fine spray particles. Examples of nozzles designed to produce coarse sprays via ground application are large capacity flood nozzles. Keep the spray pressure at or below 20 psi and the spray volume at or above 20 GPA, unless otherwise required by the manufacturer of drift-reducing nozzles. Consult your spray nozzle supplier concerning the choice of drift-reducing nozzles. - Agriculturally approved drift-reducing additives may be used. - Thoroughly clean application equipment immediately after YUKON use and prior to spraying another crop. - Avoid applications if the crop or target weeds are under stress due to drought, disease, insect damage, water saturated soils, low fertility (especially low nitrogen levels) or other poor growing conditions. - Avoid applications when rainfall is forecasted to occur within 4 hours. - Avoid using overhead sprinkler irrigation within 4 hours after application of YUKON Herbicide. - Avoid disturbing (e.g. cultivation) treated areas for at least 7 days following application. - Temporary yellowing or stunting of the crop may occur following YUKON applications. - Use of YUKON without an adjuvant can result in reduced efficacy

Notice 4 of 24 (Yukon) Postemergence - Apply YUKON Herbicide from the 2 leaf through 15 inch tall sorghum. Use drop nozzles if sorghum is taller than 8 inches. Application made when the sorghum is in the 3 - 5 leaf stage and weeds are small will result in best performance. Temporary stature reduction may occur to the crop following application of YUKON Herbicide if the grain sorghum is under stress. This effect will be most evident 7 - 10 days after application. The crop will quickly recover under normal growing conditions. Tank Mixtures for Grain Sorghum: It is the pesticide user's responsibility to ensure that all products in the listed mixtures are registered for the intended use. Users must follow the most restrictive directions and precautionary language of the products in the mixture. Tank mixtures with YUKON Herbicide can include, but are not limited to atrazine, Buctril(R) or 2,4-D. PRECAUTIONS: - Refer to "Mixing Instructions" and "Weeds Controlled Chart" for detailed information on YUKON Herbicide application. RESTRICTIONS: - Refer to "Rotational Crop Restrictions" for applicable rotational crop information. - Do not apply to sorghum grown for seed production. - Do not apply more than 1 application per 12 month period. - Following application to foliage, allow 30 days before grazing domestic livestock, harvesting forage, or harvesting silage.

Notice 5 of 24 (Yukon) ROTATIONAL CROP RESTRICTIONS Rotation intervals below may need to be extended if drought or cool conditions prevail. Rotation intervals may need to be extended on drip irrigated crops in Arizona and California. Gowan Company recommends that the end user test this product in order to determine its suitability for such intended use. When using YUKON in tank mixes, refer to the individual product labels being tank mixed. To determine rotational crop restrictions follow the longest rotational limitation of the product being tank mixed.

Notice 6 of 24 (Yukon) PRODUCT INFORMATION YUKON Herbicide is a dry flowable formulation that selectively controls broadleaf weeds and nutsedge in labeled crops. YUKON Herbicide is effective on postemergent weed applications. YUKON Herbicide can be absorbed through roots, shoots and foliage and is translocated within the plant.

Notice 7 of 24 (Yukon) WEED RESISTANCE STATEMENT Weeds can develop resistance to herbicides. Some weed biotypes have inherent resistance to certain herbicides. Also, repeated use of herbicides with similar modes of action can result in the development of resistance in weed populations. YUKON, a member of the sulfonylurea family, is an ALS enzyme inhibiting herbicide. To minimize the potential for resistance development and/or to control resistant weed biotypes, use a variety of cultural, mechanical, and chemical weed control tactics. Rotate with herbicides having different modes of action (e.g. non-ALS/AHAS materials). Contact your professional crop advisor, local cooperative extension specialist, or Gowan Company representative for additional information.

Notice 8 of 24 (Yukon) USER SAFETY RECOMMENDATIONS Users should: - Wash hands before eating, drinking, chewing gum, using tobacco or using the toilet. - Remove clothing/PPE immediately if pesticide gets inside. Wash the outside of gloves before removing. Then wash PPE thoroughly and put on clean clothing.

Notice 9 of 24 (Yukon) ENVIRONMENTAL HAZARDS This product is toxic to non-target vascular plants. Do not apply directly to water, to areas where surface water is present or to intertidal areas below the mean high water mark. Do not contaminate water when cleaning equipment or disposing of equipment washwaters. Halosulfuron-methyl is known to leach through soil into ground water under certain conditions as a result of label use. This chemical may leach into ground water if used in areas where soils are permeable, particularly where the water table is shallow.

Notice 10 of 24 (Yukon) DIRECTIONS FOR USE It is a violation of Federal law to use this product in any manner inconsistent with its labeling. Do not apply this product in a way that will contact workers or other persons, either directly or through drift. Only protected handlers may be in the area during application. For any requirements specific to your State or Tribe, consult the agency responsible for pesticide regulation.

Notice 11 of 24 (Yukon) - CALIFORNIA ONLY SENSITIVE CROP: PRUNES Buffer Zones: 1. Aerial applications shall not be made closer than 4 miles. 2. Ground applications shall not be made closer than 1 mile from prunes unless wind direction during the application is away from prunes. When wind direction during the ground application is away from prunes, ground applications shall not be made closer than 1/2 mile from prunes. COTTON Buffer Zones: 1. Aerial applications shall not be made closer than 1 mile from cotton. 2. Ground applications shall not be made closer than 1 mile from cotton unless wind direction during the application is away from cotton. When wind direction during the ground application is away from cotton, ground applications shall not be made closer than 1/2 mile from cotton.

Notice 12 of 24 (Yukon) ENGINEERING CONTROLS STATEMENTS: When handlers use closed systems, enclosed cabs, or aircraft in a manner that meets the requirements listed in the Worker Protection Standard (WPS) for agricultural pesticides [40 CFR 170.240 (d) (4-6)], the handler PPE requirements may be reduced or modified as specified in the WPS.

Notice 13 of 24 (Yukon) FIRST AID IF IN EYES - Hold eye open and rinse slowly and gently with water for 15 - 20 minutes. - Remove contact lenses, if present, after the first 5 minutes, then continue rinsing. - Call a poison control center or doctor for treatment advice. IF SWALLOWED - Call poison control center or doctor immediately for treatment advice. - Have person sip a glass of water if

AUG 29 2019

PESTICIDES

going for treatment. For emergency information concerning this product, call toll free 1-888-478-0798.

Notice 14 of 24 (Yukon) PRECAUTIONARY STATEMENTS HAZARDS TO HUMANS AND DOMESTIC ANIMALS CAUTION Causes eye irritation. Harmful if swallowed. Avoid contact with eyes or clothing.

Notice 15 of 24 (Yukon) TANK MIXES Unless stated in the "Application Instructions" section or allowed by supplemental labeling, tank mix combinations have not been evaluated and are the user's responsibility. It is the pesticide user's responsibility to ensure that all products in the listed mixtures are registered for the intended use. Users must follow the most restrictive directions and precautionary language of the products in the mixture. (For Example: first aid from one product, spray drift management from another). It is recommended that tank mixtures should be evaluated for miscibility and crop safety on a small test area prior to use. Tank mixtures should not be applied when the plants are under stress due to drought, water saturated soils, low fertility (especially low nitrogen levels) or other poor growing conditions.

Notice 16 of 24 (Yukon) SPRAYER TANK CLEANOUT To avoid injury to desirable crops, clean all mixing and spray equipment before and immediately following applications of YUKON Herbicide as follows: 1. Drain tank; thoroughly rinse spray tank, boom, and hoses with clean water. Remove the nozzles and screens and clean separately in a bucket containing agent and water. Loosen and physically remove any visible deposits. 2. Fill the tank with clean water and 1 gal of household ammonia* (containing 3% ammonia) for every 100 gal of water. Flush the hoses, boom, and nozzles with the cleaning solution. Then add more water to completely fill the tank. Circulate the cleaning solution through the tank and hoses for at least 15 minutes. Again flush the hoses, boom, and nozzles with the cleaning solution and then drain the tank. 3. Remove the nozzles and screens and clean separately in a bucket containing agent and water. 4. Repeat step 2. 5. Rinse the tank, boom, and hoses with clean water. 6. The rinsate may be disposed of on-site or at an approved disposal facility. * Equivalent amount of an alternate strength ammonia solution can be used in the clean out procedure. Carefully read and follow the individual cleaner instructions.

Notice 17 of 24 (Yukon) USE RESTRICTIONS - Do not treat areas where either downward movement into the soil or surface washing may cause contact of YUKON Herbicide with the roots of sensitive plants such as trees and shrubs. - Do not apply YUKON Herbicide adjacent to sensitive crops when the temperature at the time of application exceeds 85 degrees F as drift is more likely to occur. - Do not make more than the maximum number of applications per year for each crop.

Notice 18 of 24 (Yukon) For Optimum Results Control typically occurs within 7 to 14 days depending on the weed size, species and growing conditions. Heavy weed infestations should be treated early before the weeds become too competitive with the crop. Good coverage with YUKON Herbicide is essential. When applying YUKON follow "Weed Controlled Chart" and "Application Timing" sections of the label for improved control. When adding approved adjuvant follow mixing instructions regarding adjuvant. - For best results, wait to cultivate treated soil area for 7 to 10 days after a postemergence application of YUKON Herbicide unless otherwise specified. (Cultivation may be necessary to control suppressed weeds, weeds that were bigger than the maximum recommended size at application, weeds that emerge after an application, or weed species not on the YUKON label). - To maximize control of annual weeds, it may be necessary to use sequential applications of YUKON, but do not make more than the maximum number of applications per year for each crop. (Multiple flushes of seedlings, or treated perennials may sometimes re-grow from underground stems or roots). For postemergence applications: - Treat young actively growing broadleaf weeds 1 to 3 inches in height. - Treat actively growing nutsedge plants at the 3 to 5 leaf stage. - Wait 2 - 3 days after postemergent applications for overhead irrigation. - Avoid applications when crops are under drought, stress, disease, or insect damage.

Notice 19 of 24 (MSO Methylated Seed Oil Surfactant / Penetrant) ENVIRONMENTAL HAZARDS For terrestrial uses: Do not apply directly to water, or to areas where surface water is present or to intertidal areas below the mean high water mark. Do not contaminate water when disposing of equipment washwater or rinsate.

Notice 20 of 24 (MSO Methylated Seed Oil Surfactant / Penetrant) FIRST AID IF SWALLOWED: Call a poison control center or doctor immediately for treatment advice. Have person sip a glass of water if able to swallow. Do not induce vomiting unless told to do so by a poison control center or doctor. Do not give anything by mouth to an unconscious or convulsing person. **IF INHALED:** Move person to fresh air. If person is not breathing, call 911 or an ambulance, then give artificial respiration, preferably mouth-to-mouth, if possible. Call a poison control center or doctor for further treatment advice. **IF IN EYES:** Hold eye open and rinse slowly and gently with water for 15 to 20 minutes. Remove contact lenses, if present, after the first 5 minutes, then continue rinsing eye. Call a poison control center or doctor for treatment advice. **IF ON SKIN OR CLOTHING:** Take off contaminated clothing. Rinse skin immediately with plenty of water for 15 to 20 minutes. Call a poison control center or doctor for treatment advice.

Notice 21 of 24 (MSO Methylated Seed Oil Surfactant / Penetrant) PRECAUTIONARY STATEMENTS Warning: Causes eye irritation. Maybe harmful if swallowed. Avoid contact with skin, eyes or clothing. Avoid breathing spray mist. Wash thoroughly with soap and water after handling and before eating, drinking, chewing gum or smoking tobacco. Remove and wash contaminated clothing before reuse.

Notice 22 of 24 (MSO Methylated Seed Oil Surfactant / Penetrant) GENERAL INFORMATION MSO is derived from fatty acids extracted from soybean oil. Methylated oils are low viscosity fluids which have low volatility and good solvent properties. These characteristics enable these oils to coat leaf surfaces, soften and penetrate the waxy leaf cuticles. Thus, pesticide activity is enhanced when used with products calling for an oil-based adjuvant.

Notice 23 of 24 (MSO Methylated Seed Oil Surfactant / Penetrant) DIRECTIONS Use in strict accordance with pesticide label cautions, warnings and other directions. Apply 1 to 2 pints of MSO per acre or as prescribed by the tank mix partner's label. Use the higher rate on hard to control weeds or weeds under stress. Include liquid fertilizer (UAN) or ammonium sulfate at rate specified on the pesticide label.

Notice 24 of 24 (MSO Methylated Seed Oil Surfactant / Penetrant) Preparation and Application: While agitating, fill tank half full with water, add proper amount of herbicide, then MSO. Continue to agitate while adding balance of water to tank. Frequent agitation will assure even distribution of spray mix. Where possible, position spray nozzle to direct spray toward weeds and away from plants. Use in strict accordance with pesticide label cautions, warnings and directions. MSO should not be used with any product whose label recommends against the use of an adjuvant. Keep this container tightly closed and DO NOT allow water to be introduced into it.

Warning: Your label commodity of Not Applicable (Rate Exception) for MSO Methylated Seed Oil Surfactant / Penetrant does not match your site commodity of SORGHUM FOR/FOD. Review the site/label match, and verify this product is allowed on the commodity for this specific use in accordance with label exceptions.

Conditions

Rec No. 5509380

Yukon:

- Grazing/Forage/Silage
- Preemergent/Postemergent

RECEIVED ON

AUG 23 2019

PESTICIDES

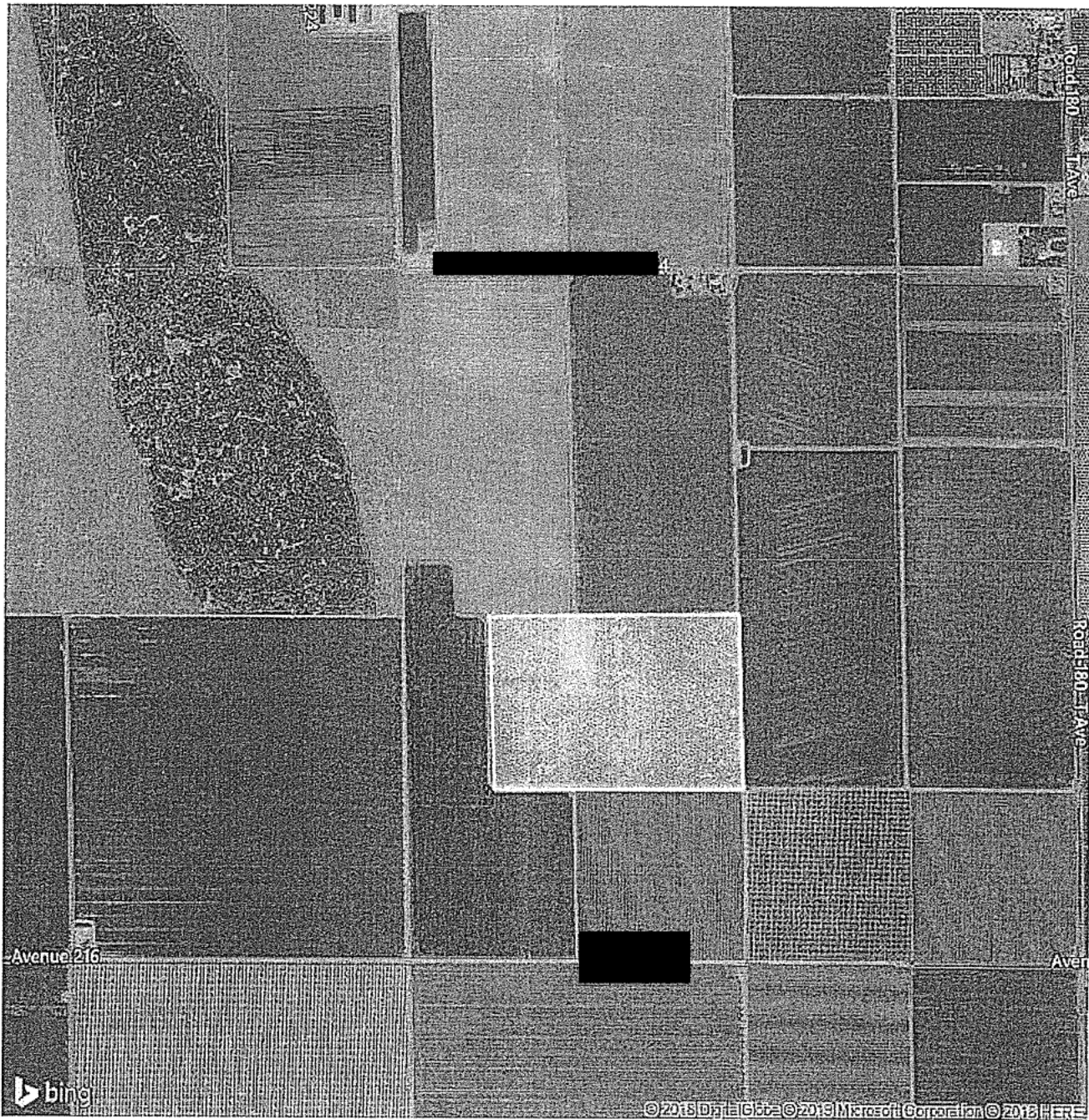
Grower [REDACTED]
County Tulare
ID 07-103

STR 17, 20S, 26E M
GPS [REDACTED]

Commodity SORGHUM FOR/FOD
Varietal
Planted 57 Acres
Location 1/4 NA 216, 1/2 WR 180
 GWPA-RUNOFF

Surrounding Crops

CORN	ALFALFA	CORN
CORN	Treatment Area	CORN
CORN	GRAPES	GRAPES



The displayed buffer zone dimensions are estimates and for reference only. Verify the measurements at the location, the selected product label and environmental requirements, restrictions, and recommendations. Read the [Terms of Use](#) published at Agrian.com

Shared With - Joshua Vieira



Tulare County

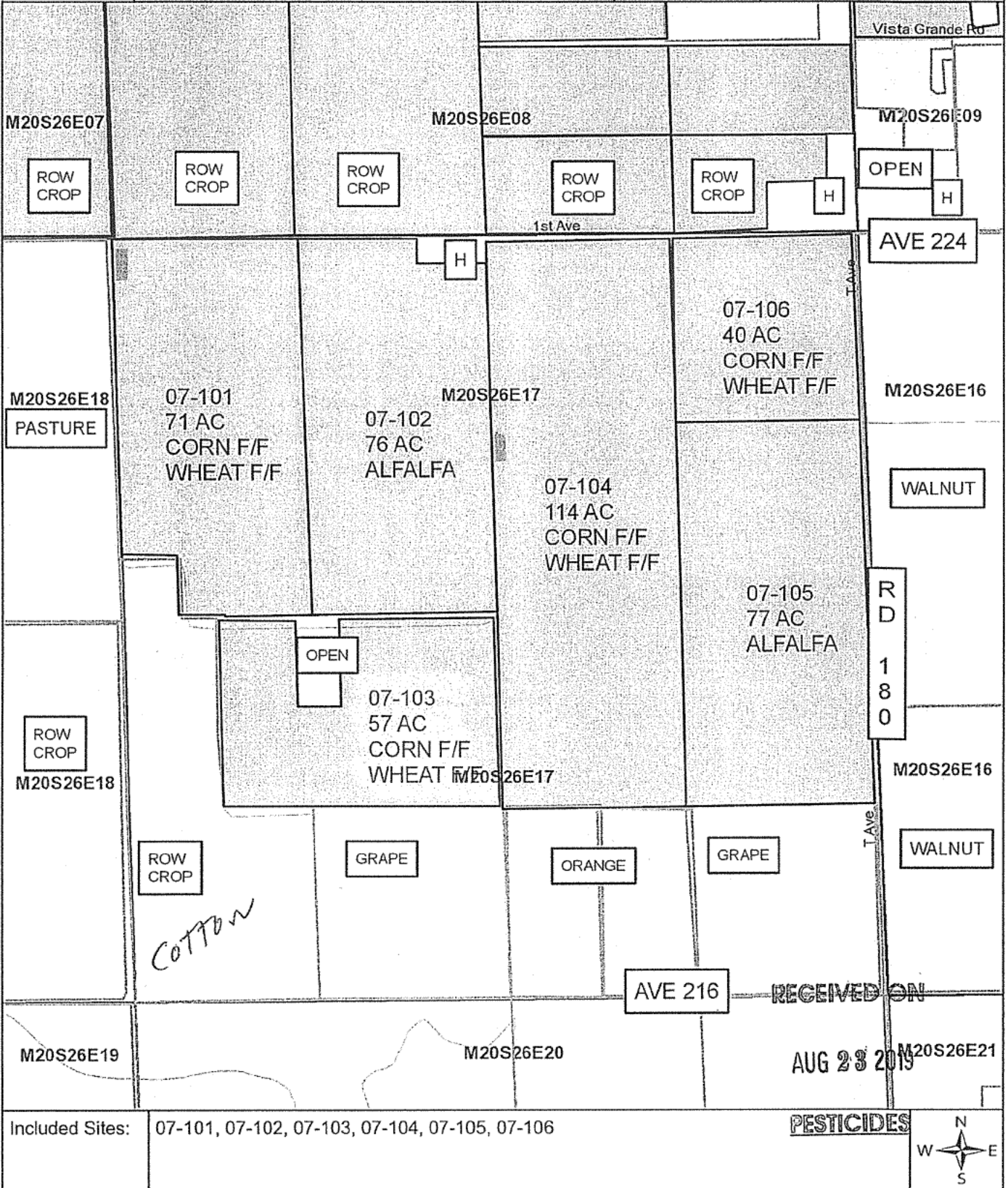
Permit Number: [REDACTED]

MAP 07

Created On: 12/6/2018

M20S26E17

Operator: [REDACTED]



Included Sites: 07-101, 07-102, 07-103, 07-104, 07-105, 07-106

PESTICIDES





Tulare County Agricultural Commissioner/Sealer

Tom Tucker, Agricultural Commissioner
Sealer of Weights and Measures

PERMIT REFUSAL BASED ON EVALUATION OF THE APPLICATION / NOTICE OF INTENT

Property Operator [REDACTED] Permit number [REDACTED]
 Application Date 8/23/19 Pesticide requested Yukon
 Commodity Sorghum F/F Pest Weeds
 Site IDs 07-103

NOTICE OF GROUNDS FOR REFUSAL (Food and Agricultural Code sections 12825, 14006.5, and 14008)

- The pesticide is not listed on the site i.d. on the restricted materials permit
- The pesticide is not registered for the use on this commodity
- There are serious, uncontrollable adverse environmental impacts that cannot be mitigated
- The proposed use is of less value than the benefits obtained
- There is a feasible alternative available that is less damaging to the environment
- There are sensitive sites too near to the proposed application site
- There is a likelihood of problems related to heterogeneous plantings of crops
- There is a likelihood of pest resurgence or secondary pest problems
- There are unsuitable meteorological conditions for use
- The timing is unsuitable in relation to bee activity
- Unpaid fine
- Violations documented by final enforcement orders
- Other Sorghum F/F not a commodity on site
- Additional Comments Per Yukon label: Buffer zone for sensitive crop cannot be established due to proximity

NOTICE OF OPPORTUNITY FOR REVIEW AND APPEAL OF ACTION (Food and Agricultural Code section 11512.5)

If you do not agree with this action, you may make a written request for a hearing for reconsideration of this decision within 20 days. Your request should include any information you believe is relevant to the issue. You will receive at least ten days advance notice of the time and date set for the hearing. If you do not request a hearing, this action will be final.

You will receive a written decision of the county agricultural commissioner after the hearing. If you requested and appeared at the hearing, you may appeal the decision to the Director of the Department of Pesticide Regulation within ten days. Thereafter, you may request court review of the Director's decision.

Property Operator Signature _____ Date _____

Inspector Signature [Signature] Date 8/23/19